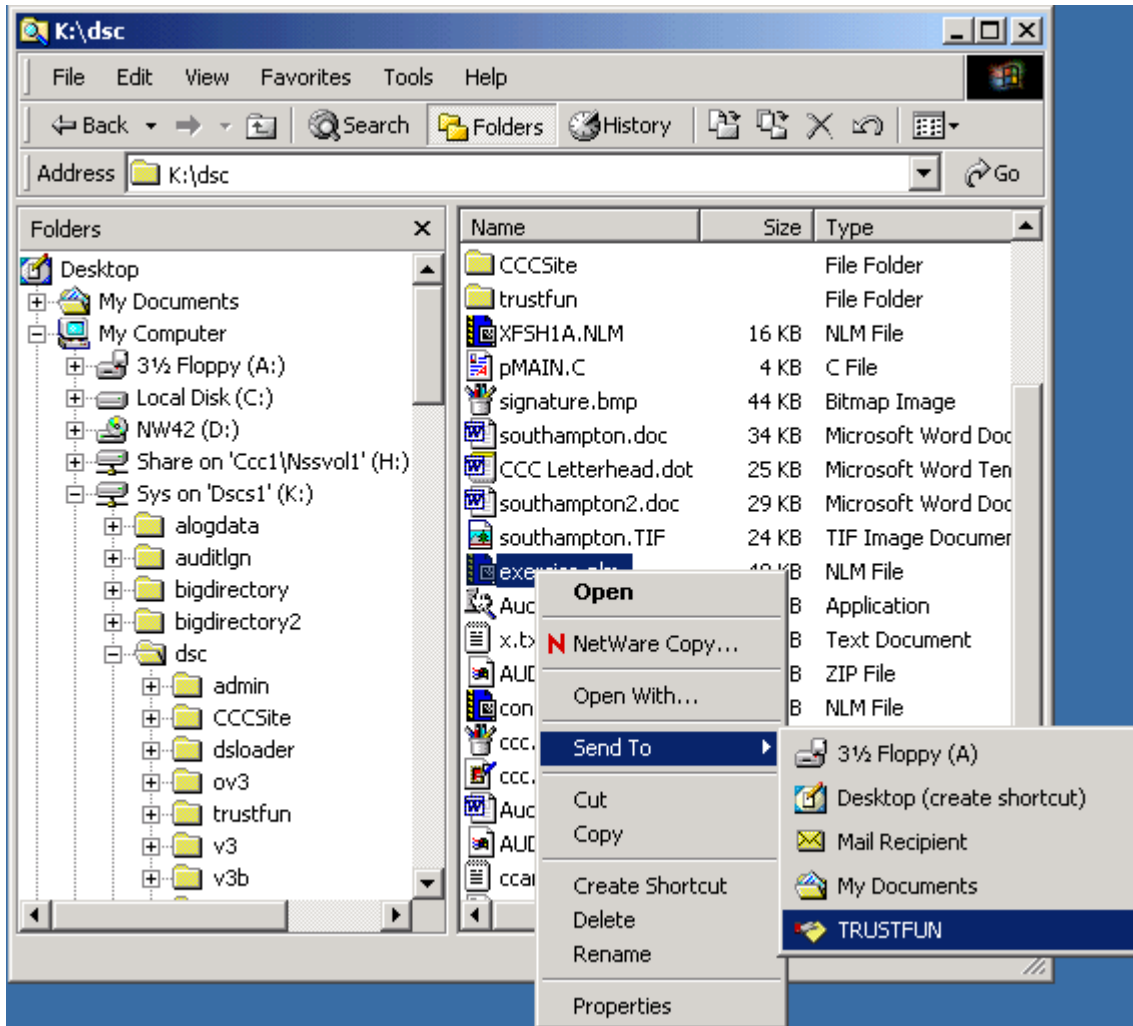


# Installation

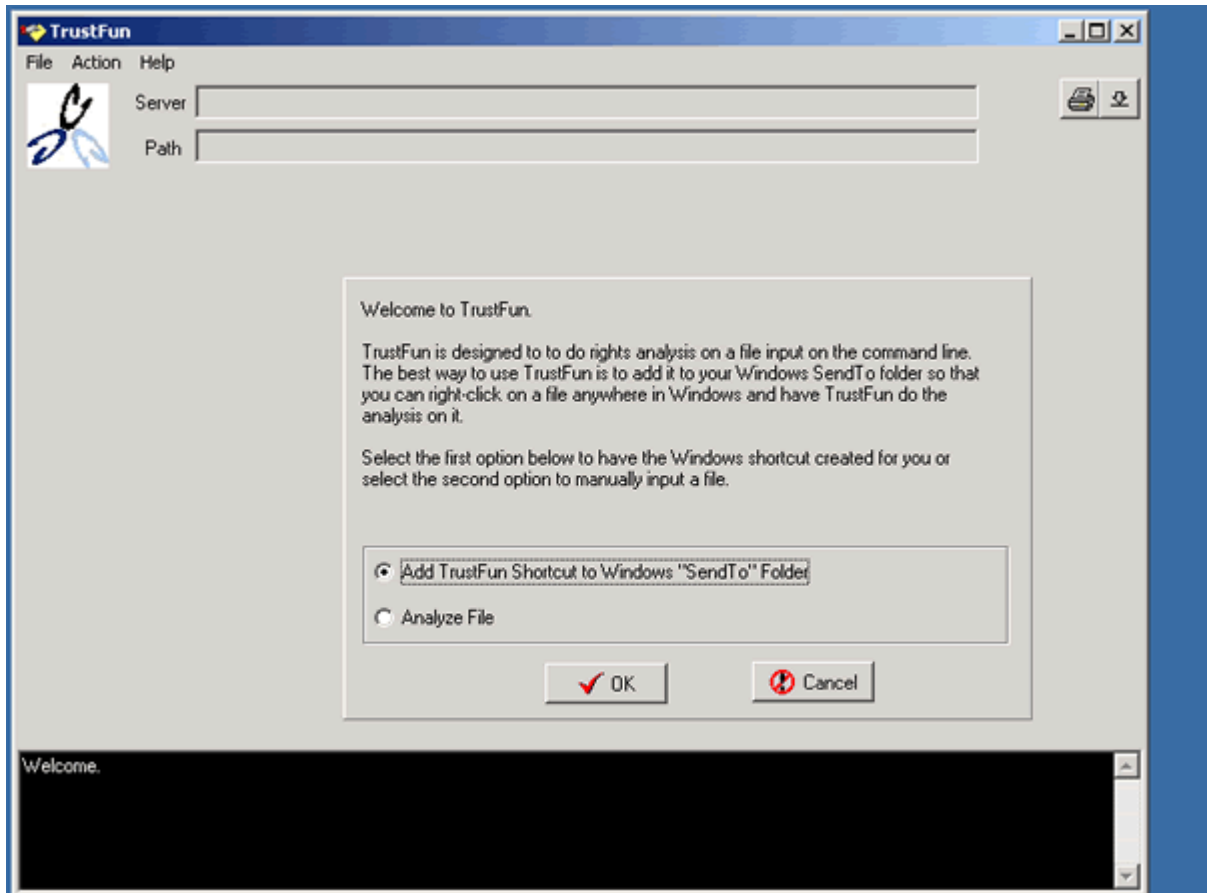
TrustFunT is designed to accept the file for analysis as a command line parameter and therefore is built to run from the WindowsT SendTo menu as shown below:



In order to get to this point, you need to run the TRUSTFUN.EXE once to install the license key(s) and get the SendTo shortcut established. Follow the installation procedure below:

1. Extract the TRUSTFUN.ZIP distribution file into a directory. This directory should be on a server if you want multiple people to use the tool. When each person runs the tool the first time, he/she will be given the option of having TrustFun create their own personal shortcut to it by placing the shortcut in their SendTo folder on their own machine. There is only one file in the distribution. TrustFun will create the INI file when you set the license key. The INI file has no user-dependent information





- Select the "Add ShortCut" option to have a Windows shortcut added to you Windows SendTo folder. Each user that wants to use TrustFun should perform this operation.
5. After this is done, you should be able to use the Windows Explorer to send files or directories to TrustFun for analysis as shown at the top of this page.