

# Kanaka for Macintosh



## Identity Driven Storage Access and Authentication

- Integrates Mac OS X and Novell eDirectory for contextless authentication
- Automatically mounts and discovers Network Storage resources
- Leverages existing Identity and storage infrastructure
- Enables eDirectory password management



For Macintosh users, connectivity with Novell networks can sometimes be problematic or expensive or both. Condrey Corporation is pleased to deliver the Kanaka family of products for Macintosh OS X systems accessing resources on Novell® networks. Developed under the guidance of Apple Directory Services Engineering to assure complete integration with OS X, Kanaka is a next generation technology for eDirectory™ connectivity. Kanaka integrates seamlessly with eDirectory, leveraging standard stock Identity and storage-related attributes such as the home directory attribute. Provisioning and management of additional attributes is not required.

Kanaka is a Directory Services plug-in for Mac OS X that delivers fully automated desktop user access to NetWare services, including personal and collaborative storage and password change functionality. It integrates with the Mac OS X login subsystem to provide users with context-less single-sign on to both their OS X computer and Novell eDirectory simultaneously. Kanaka then goes about the task of automatically discovering, identifying, and mounting direct access to both personal and collaborative network storage for the user based solely on the user's identity.

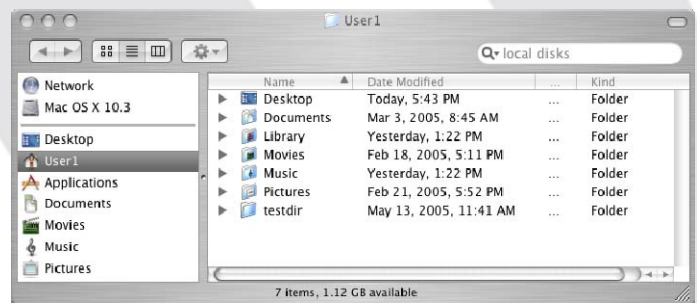


With links to storage being built dynamically based on the user's identity at login, Kanaka lets users move from machine to machine and not have to worry about remembering the location of their storage or traverse from the root of a volume down to their storage in order to access files. This eliminates the need for System Administrators to train users how to find their storage or visit each individual client machine to mount volumes. Novell System Administrators now have more freedom to move storage around the network or provide connectivity to collaborative storage

without users having to make any changes to workstations.

Due to the complexities of having to manually mount volumes, practical usability of collaborative storage has generally been limited for OS X users. Kanaka opens up a whole new world for the use of collaborative network storage by eliminating this tedious manual process. Users now derive direct connectivity to their group storage just by being added as a member of the group. This allows organizations to start using one of the most powerful tools of the network to help users collaborate. For example, companies can create shared storage for working teams to secure and share important documents. Schools can create storage space for each class/section. Perhaps most importantly, there are no login scripts to maintain.

The Kanaka product family solves the challenges of providing a low-cost, seamless, secure, and easy to understand method of authenticating users to eDirectory and an identity-driven method of accessing storage resources.



# How Kanaka Works

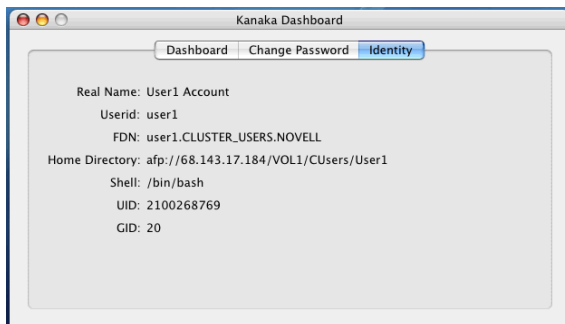
Kanaka is architected as a "light-client" solution that brings together native OS X technology, standard eDirectory connectivity, and Novell's Native File Access. Kanaka clients communicate with eDirectory to perform contextless user authentication and retrieve identity information in order to auto-mount both user home directories and collaborative (group) storage located on Novell file servers running Novell's Native File Access protocols. Native File Access allows OS X systems to connect to Novell NetWare servers using the Apple File Protocol (AFP) or CIFS/SMB. Kanaka also integrates with Novell NetStorage, providing the ability to auto-mount group storage defined by Storage Location Objects.

Kanaka is available to customers in multiple editions to match the needs of any organization:

- Kanaka Standard Edition is available to those customers who want the base functionality of context-less authentication to eDirectory and automatic discovery and mounting of the user home directory on a Novell server.
- Kanaka Enterprise Edition extends Standard Edition functionality to automatically discover and mount all collaborative group storage for the user and includes integration with Novell NetStorage.

In the first phase of a login, the user is authenticated using eDirectory. If the authentication succeeds, Kanaka will proceed by retrieving identity-based information about that user. As the next step of the login process, Kanaka discovers the user's home directory based on the standard eDirectory HomeDirectory attribute and converts it into AFP or CIFS/SMB format,

eliminating the need to manage a separate attribute for each user. With Kanaka Enterprise



Edition, more identity information is retrieved from eDirectory along with associated group information and storage location information.

Kanaka discovers each of these storage locations based solely on the user's identity and then automatically mounts the storage by passing appropriate control structures back through OS X to Native File Access. This auto discovery feature totally eliminates the need for users to know where their storage is located on the network, and the manual process of mapping associations to the storage or traversing from the root of the volume in order to access files.

Connectivity using Native File Access classically is based on a paradigm

of single server access. In other words, the need to access files on two servers requires an authentication to each as well as a mounting

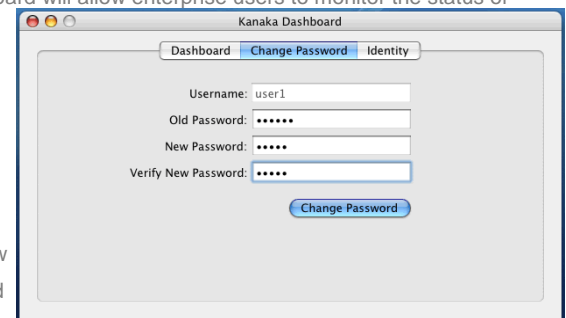
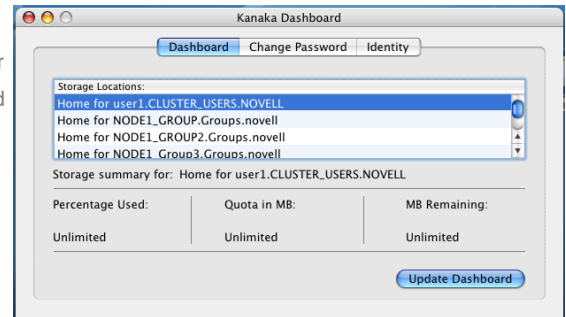
and traversal of each volume independently. In contrast, Kanaka brings the Novell Client32-like experience of single authentication, multi-server access in a single operation to the world of OS X.


The Kanaka Dashboard provides Mac OS X users with a quick and easy way to check the current status of their available network storage. The Kanaka Dashboard will allow enterprise users to monitor the status of their shared storage space.

Users can now monitor their home directory's status and know when they need

additional space. Kanaka Dashboard includes change password functionality, providing Mac OS X users the ability to change their eDirectory password natively on the OS X platform.

Kanaka is a great time saver for both users and Novell System Administrators, providing Mac OS X users the easiest and most elegant access available to the Novell-based File System.





125 The Parkway, STE 500  
Greenville, SC 29615  
Phone: 864-329-8528  
Fax: 253-830-8701  
www.condreycorp.com  
Copyright © 2007 Condrey Corporation All Rights Reserved.

All third party trademarks are the property of their respective owners.

Mac and the Mac logo are trademarks of Apple Computer, Inc., registered in the U.S. and other countries.

