

# AuditLogin v3.2

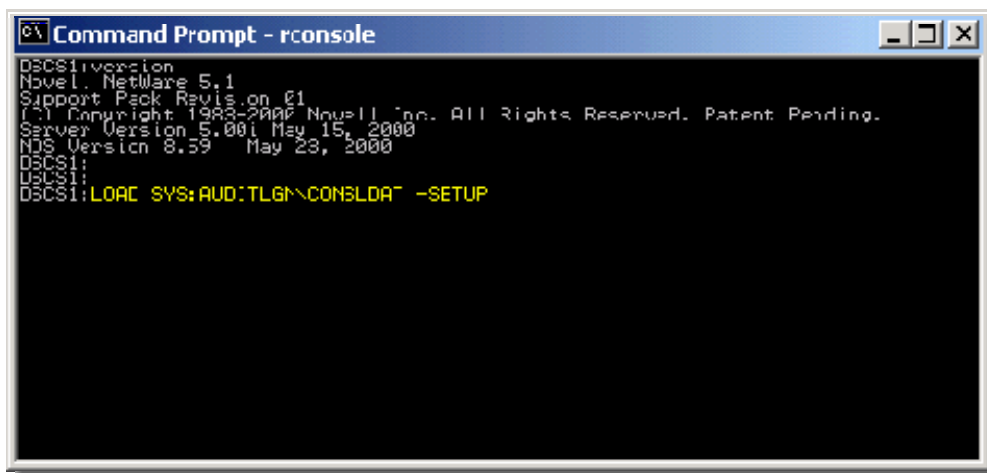
## Install

### Cookbook Installation:

This installation is designed to not take more than 5 minutes, even if you have never seen AuditLogin before.

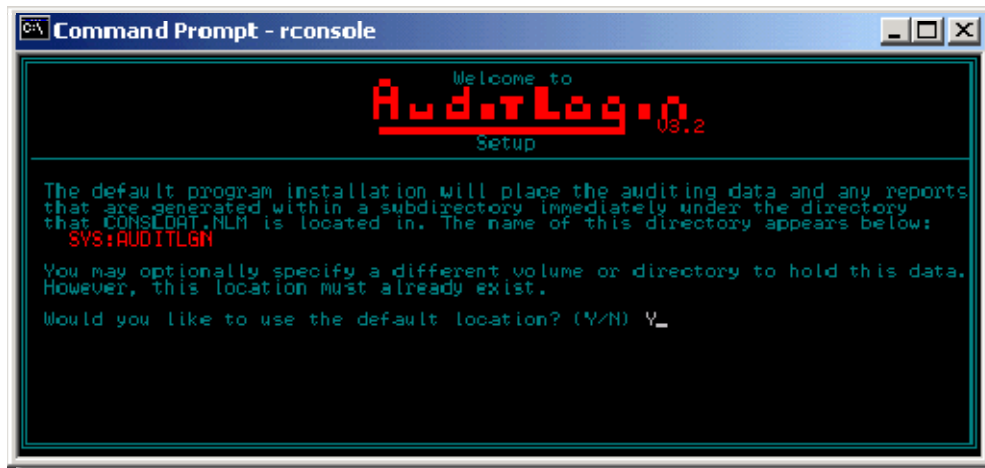
1. Select a server to serve as the consolidator. This will run the consolidation NLM named CONSLDAT.NLM. If you are unsure as to what this is, see the [component overview page](#). This server does not need to be very high in power, especially if you are going to be auditing fewer than 20 servers with a moderate amount of activity.
2. Create a directory to hold the NLMs. This is referred to as the distribution directory. Rules for this directory are:
  - o You must select a volume that is present on all servers that you might want to audit (ex: SYS). The directory takes very little disk space and you have to option of storing the auditing data on a different volume. Take a moment to review the section on [AuditLogin Version 3.2 Directory Placement](#).
  - o To maintain compatibility across NetWare versions, Long filenames in the path are not currently supported so do not use them. (Example: SYS:AUDITLGN)
3. Unzip the distribution package into the directory that you just created. The following are the principle files in the distribution:
  - o CONSLDAT.NLM - the consolidation NLM.
  - o AUDITLGN.NLM - the system monitoring NLM.
  - o AUDITADM.EXE - Win32 administrator tool.
4. On the server console, load the consolidator with the -SETUP option.

Example: "LOAD SYS:AUDITLGN\CONSLDAT.NLM -SETUP")



```
Command Prompt - rconsole
DSCSIversion
Novel. NetWare 5.1
Support Pack Revision 01
© Copyright 1988-2000 Novell, Inc. All Rights Reserved. Patent Pending.
Server Version 5.00i May 15, 2000
NDS Version 8.39 May 23, 2000
DSCSI:
DSCSI:
DSCSI:LOAD SYS:AUDITLGN\CONSLDAT.NLM -SETUP
```

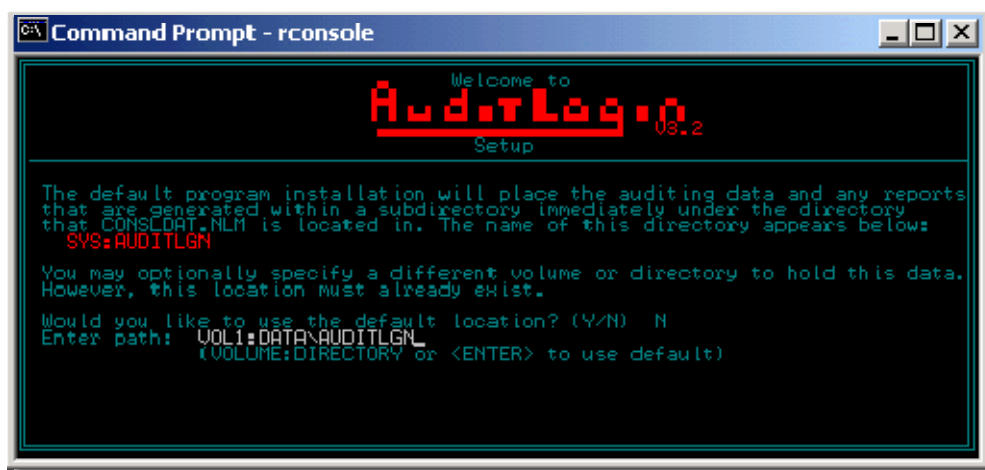
5. You will be asked to select a location on the server in which to store the auditing data files.



If Yes is selected, the auditing data will be placed in a subdirectory of the master directory and you will proceed to step 6 below.

If you want to change the location of these files later, you may do so using the Admin tool. For more information, see the section on [AuditLog Version 3.2 Directory Placement](#).

If No is selected, you will be prompted to enter the path of the directory (which must already exist):



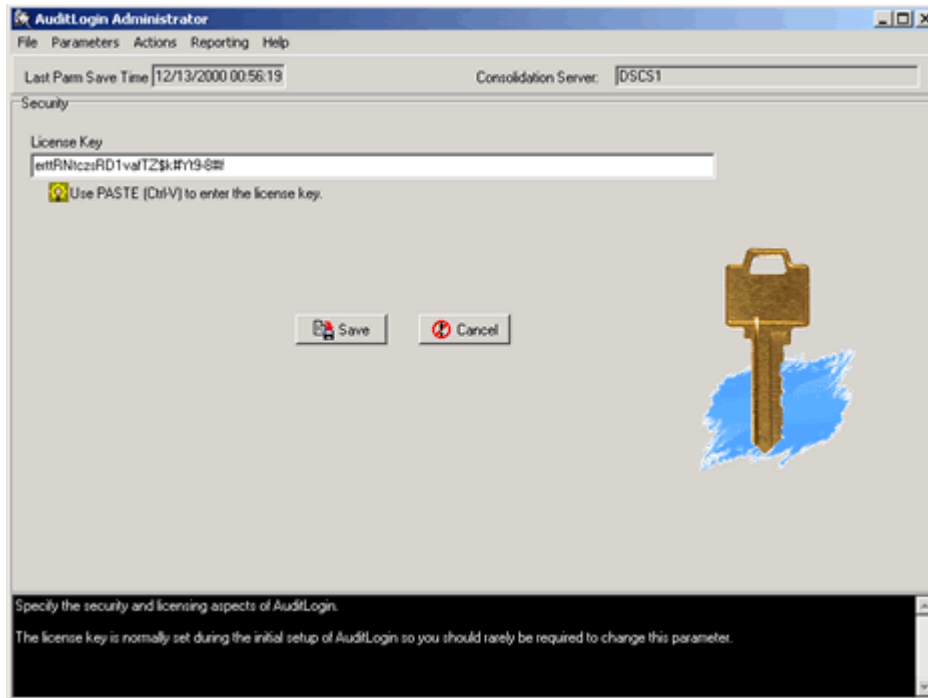
6. You will be prompted to agree to complete the installation.

```
Command Prompt - rconsole
Welcome to
AuditLog V3.2
Setup
Setup will perform operations to complete the installation.
1. Creating AuditLogin V3 initialization file.
2. Creating AUDITLOG directory to contain consolidated auditing logs.
3. Creating batch file to start Win32 Administrator application.
4. Creating STATS directory to contain consolidated statistics logs.
5. Creating REPORTS directory to contain customized reports.
Perform above actions? (Y/N) Y_
```

If you agree, the following actions will be taken:

- The system parameter file will be created to allow for further product installation. This file is named AUDITLGN.INI and will be placed in the *master directory*. All system parameter defaults will be set and a special license key "Initialize" will be set.
  - A subdirectory named AUDITLOG will be created in the log directory. This is where the system will place auditing data that is sent in from all servers running the system monitoring NLM (AUDITLGN.NLM).
  - A DOS batch file named GOADMIN.BAT will be created to allow you to continue the installation by starting the Win32-based Administration program. The batch file will start the Admin tool with the required -S option to specify the name of consolidation server.
  - A subdirectory named STATS will be created in the log directory. This is where the system will place statistical information that is sent in from servers running the system monitoring NLM.
  - A subdirectory named REPORTS will be created in the log directory. When someone requests that a report be generated, this is where the report will be stored.
7. After completing the initial setup, the consolidation NLM will finish initialization in setup mode. Until you use the Administrator to set the license key, the Consolidator will not be able to receive auditing data from any servers. Here is a screen shot of the consolidator in this state:

8. Now you will need to set the license key and other operating parameters. To do this you will need to start the Win32-based Admin tool. You can do this a number of ways:
  - o Click on the GOADMIN.BAT file.
  - o Start->Run with the required -S option specifying the name of the server running the consolidation NLM.
  - o Create a NetWare Application Launcher application object that specified the above parameter.
9. When the tool starts, you should be shown the Security page where you can PASTE in the product license key.



10. Paste in the license key and click "Save". If the license key is invalid, you will be informed at this point. Contact [support](#) if you have problems with the license key.
11. (optional) Add the LOAD command for the consolidator to the AUTOEXEC.NCF file for the consolidation server. (Ex: "LOAD SYS:AUDITLGN\CONSLDAT.NLM")
12. You now need to enable auditing on one or more servers by selecting "[Audited Servers...](#)" under the "Parameters" menu option.
13. At this point, AuditLogin is setup in a base configuration.
14. Refer to the configuration section for information on other parameters or configuring other servers to run the system monitoring NLM (AUDITLGN.NLM)